

RESEARCH TITLE SIDC Jeddah 2025

INTRODUCTION

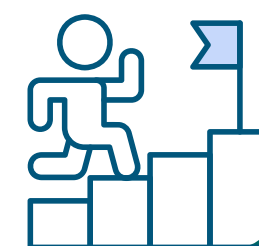
- Write in bullet points (max. 6 bullets)
- Write maximum 2 sentences for each bullet
(No Paragraphs)
- It should include:
 - 1-Statement of the problem
 - 2- Old solutions to the problem
 - 3- Limitation of those solutions
 - 4- New technique in your study to overcome the limitations of the old solutions (Novelty of the study)



RESULTS

This Section must include the following:-

- Figures & graphs showing the results
- Figures should be labelled
- There should be very brief interpretation & analysis of the results & figures
- Statistical Analysis should be included with the P value **(make sure not to write in paragraph format)**
- Graph/Figure – Must Include Label and P-value
- Use high-resolution figures (300 dpi), and avoid blurry screenshots.



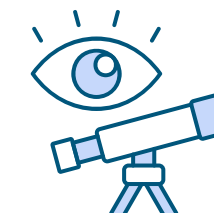
OBJECTIVES

Objectives should be specific **(make sure not to write in paragraph format)**



LIMITATIONS

- Mention the things that restricted you to get the better results
- Mention the weaknesses you encountered in the study



CONCLUSION

Write the interpretation of the results
(make sure not to write in paragraph format)

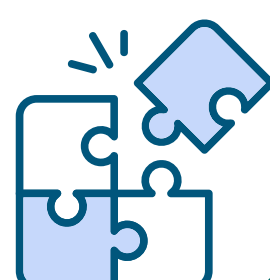


METHODOLOGY

This section must include the following:-

(make sure not to write in paragraphs format)

- Type of Study (In-Vivo, In-vitro, Questionnaire)
- Power selected & sample size
- Randomization techniques used (If applicable)
- Sociodemographic table (If applicable)
- Figure or table showing the design of the study
- Sub groups used with sample size
- Detailed techniques used for data collection and method of measurements using figures or diagrams
- Statistical test used for data analysis



IMPACT OF THE STUDY

- What are the implications of your significance
 - Mention how your study will affect the patients and the profession
- (make sure not to write in paragraphs format)**



REFERENCES

Put the references by using QR code

